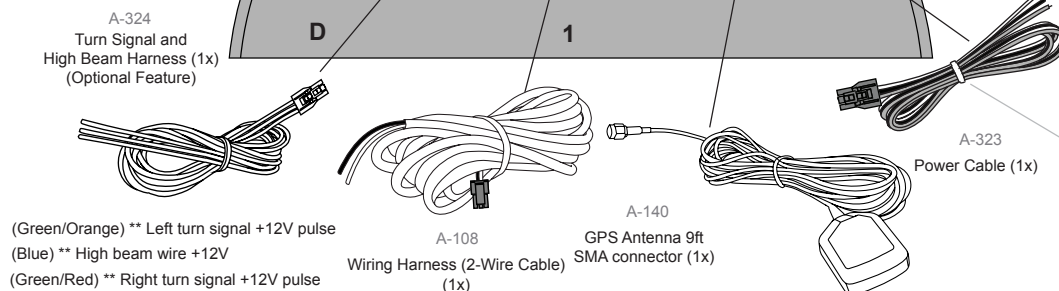


# 4", 4-1/2" Dual GPS Fuel/Speedometer Instructions

# SPEEDHUT®

## BACK OF GAUGE

**ATTENTION:**  
Power Draw = 0.2 amp.



## INSTALLATION

- 1 DISCONNECT your vehicle's negative (-) battery cable.
- 2 MOUNT your gauge to the panel using the spin lock ring.
- 3 CONNECT the gauge wiring.
- 4 RECONNECT your vehicle's negative (-) battery cable.

WHITE: +12v Dash Lighting  
(Gauge lighting)  
BLACK: Ground  
RED: +12v Accessory Power  
(Main Gauge Power)

## ANTENNA CONNECTION

1. Hook up speedometer power requirements as shown.
2. Thread on GPS receiver antenna into back of speedometer. (Make sure it is threaded on all the way for a good connection.)
3. For best performance, mount GPS antenna with as much view of sky as possible (preferably on the roof of the vehicle). The GPS antenna is waterproof and magnetic. If the car's roof is not accessible then mount the antenna on top of the vehicle's dash with as much exposure as possible to the sky through the window. (Antenna is able to receive signal through some thin material i.e. wood, glass, fiberglass, and plastic. All types of metal will block the signal.)

## GPS QUICK START

GPS location is saved internally for up to a 4 hour period. After 4 hours it will take 30-40 seconds to acquire signal again.

## MENU FEATURES

Select different menu items by pressing the button once the GPS has acquired.

### Odometer and Trip



Odometer (shows up to 999,999)  
Trip Odometer (shows up to 99,999.9)  
Press and hold button to reset trip.

### Clock



Clock Feature. Time is acquired from GPS satellites. User only needs to adjust the hour setting for their time zone.  
PRESS AND HOLD button to set clock hours. (Color will invert)  
Toggle through A.M./P.M. hours until correct time is reached.  
Release button for several seconds and time is stored. (Color will return to normal)

### Elevation



Elevation feature is acquired from GPS satellites and shows the current elevation from sea level in feet or meters depending on the model.

### Speed (MPH or KMH)



Speed feature shows MPH or KMH in display depending on the model.

### Direction



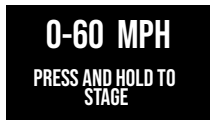
Shows the current direction  
Note: Default direction is North(N). Correct direction is displayed only when moving.

### Peak



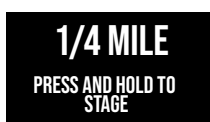
Shows the top speed reached.  
Press and hold to clear peak.

### 0-60 MPH Time



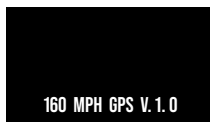
Press and hold button to stage while car is stopped. Timer will start as soon as car starts to move. Accelerate to 60+ MPH/100+ KMH. Timer will stop once 60MPH/100KMH is reached and show the time to nearest 1/100th of second on screen and distance in feet traveled.

### 1/4 Mile Time

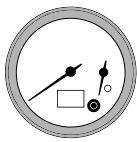


Press and hold button to stage while car is stopped. Timer will start as soon as car starts to move. Drive through 1/4 mile. Timer will stop once 1/4 mile distance is reached and show the time to nearest 1/100th of second and speed to nearest 1/10th mph.

### About Screen



Displays gauge version.



## FUEL LEVEL SETUP MENU

Follow the steps below for all menu items

1. PRESS AND HOLD button down while turning on gauge power to enter tachometer setup menu.
2. A quick button press will toggle LCD screen through all available menu settings below.
3. PRESS AND HOLD to select the menu item (2-3 seconds).
4. PRESS AND HOLD button to change setting.
5. RELEASE button and menu will be saved after 5 seconds.

### CALIBRATE FUEL EMPTY

**243** OHMS  
HOLD TO SELECT

Calibration with fuel level sensor connected to the gauge:

1. Move sensor to the empty position.
2. Press and hold the button for 3 seconds.
3. The gauge will read the ohms from the sensor.
4. Release the button and wait 5 seconds for the reading to be saved.

Calibration with fuel level sensor NOT connected to the gauge:

1. Determine the empty ohm value of your fuel level sensor.
2. Press and hold the button for 3 seconds.
3. The gauge will read the ohms from the sensor.
4. Press and hold the button to change the reading on the gauge to match the empty ohm value of your sensor.

NOTE: Releasing the button and holding it down again will change the direction of the numbers.

5. Release the button and wait 5 seconds for the reading to be saved.

### CALIBRATE FUEL FULL

**33** OHMS  
HOLD TO SELECT

Calibration with fuel level sensor connected to the gauge:

1. Move sensor to the full position.
2. Press and hold the button for 3 seconds.
3. The gauge will read the ohms from the sensor.
4. Release the button and wait 5 seconds for the reading to be saved.

Calibration with fuel level sensor NOT connected to the gauge:

1. Determine the full ohm value of your fuel level sensor.
2. Press and hold the button for 3 seconds.
3. The gauge will read the ohms from the sensor.
4. Press and hold the button to change the reading on the gauge to match the full ohm value of your sensor.

NOTE: Releasing the button and holding it down again will change the direction of the numbers.

5. Release the button and wait 5 seconds for the reading to be saved.

### SET WARNING POINT



HOLD TO SELECT

Set Low Fuel Warning

Note: PRESS AND HOLD the button to move the pointer to the desired warning point.

To change the sweeping direction of the pointer release the button and press and hold the button again. To save the setting release the button and it will be saved after 5 seconds.

### SET DAY BRIGHTNESS



HOLD TO SELECT

Set Day LED Brightness

Note: PRESS and RELEASE button to toggle through the brightness settings. There are 5 brightness settings including off.

### SET NIGHT BRIGHTNESS



HOLD TO SELECT

Set Night LED Brightness

Note: PRESS and RELEASE button to toggle through the brightness settings. There are 5 brightness settings including off.

## CONTACT US

Support@Speedhut.com  
801-221-1460 (9a-4p MST)  
FAQ - Speedhut.com/faq.i  
www.Speedhut.com

## LIFETIME WARRANTY

We take pride in the products we make and offer a Lifetime Warranty on gauge electronics and a 5-year warranty on hardware for every gauge, tachometer and shift light purchased since Jan 1, 2006. Every SPEEDHUT product is built for a lifetime of service, and we warrant to the person who originally purchased the product that all SPEEDHUT products will be free from defects in workmanship and materials for their applicable warranty period. If a defect occurs during the warranty period as the result of the product's intended use, we will repair or replace the defective product or part, to our discretion. The warranty does not cover defects caused by third-party modifications, repairs or replacement parts. Any holes, scratches, normal wear and tear, and the natural breakdown of colors and materials over extended time and use are not warranted.